



HOME Inspirations

Garden • Landscape • Remodeling • Building • and More!

Inside & Out



SUPPLEMENT TO THE DRUMMER

SUNDAY, APRIL 23, 2023



NHI Insulation & Concrete Lifting
SINCE 2018

612.888.0208

NHIfoam.com

INSULATION

- Foam
- Fiberglass
- Cellulose

CONCRETE LIFTING

- Sidewalks
- Driveways
- Garage Floors

VETERAN OWNED & OPERATED

Commercial & Residential • Licensed & Insured
Delano, MN

**NO
OTHER GARAGE DOOR
OPENS YOUR WORLD LIKE
LIFTMASTER®**



Elevate Your Garage Door Opener

Shown: Model 84501 7'
Built-in WiFi with LED
Lights (1,500 Lumens)

Stay connected and in control in your home with a LiftMaster®, part of a full lineup on MyQ®-Enabled Garage Door Openers. Open, close and monitor your garage door and receive alerts through your smartphone so you can always feel secure.



Apple® and iPhone® are registered trademarks of Apple Inc.

Above Garage Door Opener
with TWO Car Remotes
+ Keyless Entry for 7' High Door



Model 895MAX

\$585

Custom
DOOR SALES, INC.
763-535-0042

24/7
Service
Broken Spring
Specialist

For All Your Garage Door & Opener Needs
WWW.CUSTOMDOORSALES.COM

LiftMaster

POWERED BY myQ

2023 AAS Edible – Vegetable Winner

Article & photo by
All-America
Selections

*Squash kabocha
Sweet Jade F1*

This cute, single-serving-sized squash is the perfect addition to your garden for a fall harvest. Sweet Jade proved itself in the AAS Trials with its high yields and good holding capability which is great news for both home gardeners and growers. Each fruit is between 1-2 pounds and can be used for sin-

gle servings of squash, as an edible soup bowl, or in any number of Asian-style dishes where a sweet, earthy nutritious squash is typically used. Sweet Jade's deep orange flesh is dry yet sweet and very flavorful whether roasted, baked, or pureed. Time to give this sweetie a try.

How to Grow

Plant in full sun, no staking required. Spacing in garden should be 12 inches in row, and 6-12 feet between rows.



Signs a home exterior needs updating for curb appeal

Renovations are a great way for homeowners to reshape their homes. Some may aspire to renovate so their home is more reflective of their personal taste, while others may do so in an effort to make their homes better align with modern styles and sensibilities. Regardless of why a homeowner chooses to renovate, the need to do so is often evident to the naked eye, especially when the time comes to update home exteriors.

Curb appeal is often discussed in regard to the effects it can have when selling a

home. But curb appeal is equally important for homeowners who aren't putting their homes on the market. A well-maintained, aesthetically appealing home is a source of pride, while a home with fading curb appeal can make homeowners feel a little sheepish. Homeowners who want their homes to maintain their curb appeal can look for signs that it's time to update their home exteriors.

- **Curling shingles:** The roof may not be the first thing people think of when pondering curb appeal, but a damaged

roof can contribute to problems that ultimately affect the exterior and interior of the home. Multiple curling shingles indicate it's time to replace the roof. The sight of curling shingles is not pretty, but the larger issue in such instances is the potential for costly water damage when water gets in through the affected shingles.

- **Dated entry door:** Many home improvement experts insist they can determine

when a home was built or most recently renovated simply by looking at the front door. Steel and glass doors are popular in modern homes, so homeowners with front doors with ornate designs and oval glass inserts can likely benefit from an upgrade to their entryway. A modern front door can

Home Exterior

Continued on Page 6



NEED PAVING?

We're Ready To Roll!

CUSTOM ASPHALT AND CONCRETE

Exclusive to the Area

What is Fiber-Mix?
Omamn Brothers has acquired the best asphalt product on the market that is more durable for driveways!

CALL FOR MORE DETAILS

Quality Workmanship to Residential & Commercial for over 46 years!

CALL TODAY FOR A FREE ESTIMATE!

OMANN

Brothers Paving, Inc.

Albertville, MN

763-497-8259

www.omanninc.com

WE GROW FOR YOU



Untiedt's

FIND US BACK
DOWNTOWN

15 1st Ave. South
Buffalo, MN 55313

(across from the lake)



SPECIAL
OFFER

Choose from a wide variety of annuals, perennials, vegetable plants, hanging baskets, patio pots, and more!

Need assistance? Our friendly, knowledgeable staff can help!

\$5 OFF

ANY HANGING BASKET
OR PATIO POT

Must present coupon at time of purchase. Limit 3 items. Not valid with other offers. Expires May 13, 2023.



Mon-Fri: 9am-8pm | Sat: 8am-7pm | Sun: 9am-6pm

www.untiedts.com | 763-760-2338

Create your native plant garden

Gardening is a worthwhile endeavor that not only passes the time, but can be a form of exercise and relief from the daily grind. Gardens also provide ample opportunity to

experiment, as individuals can produce everything from vegetables to bountiful blooms.

Recent years have witnessed a growing emphasis on eco-friendly gardening that

aims to reduce reliance on chemical fertilizers and pesticides in an effort to protect the planet. One way to do so is to rely on native plants.

What are native plants?

Native plants are indigenous to particular regions. The National Wildlife Federation says native plants grow in habitats without human introduction or intervention. Native plants have formed symbiotic relationships with local wildlife over thousands of years, which the NWF notes makes them the most sustainable options. Native plants help the environment and thrive with little supplemental watering or chemical nutrients.

Natives vary by region

Native plants vary by region. In arid climates, certain succulents may be native because they don't need much rainfall to thrive. In lush wetlands, succulents might be out of place.

Start native planting

The NWF offers native plants for 36 different states that can be shipped right to customers' doors to help replenish

native varieties. In addition, gardeners can visit local gardening centers to select native plants. Small and independent-owned centers often feature knowledgeable local staff whose expertise can prove invaluable to individuals seeking native varieties.

It's important to keep in mind that native varieties may look less cultivated than more exotic blooms and foliage designed to sell for their unique appearances. Wildflowers and native grasses may be the types of native plants found in abun-

dance, which may grow up and out quickly. These other tips can help the process.

- Plan and prepare the site by removing weeds and turning over the soil. This will give seedlings an opportunity to take root without competition from weeds. Seedlings will give gardens a faster head-start than waiting around for seeds to germinate. However, gardeners can start seeds indoors and then move them outside once they are seedlings.

- Avoid planting native plants in rows, as that's not how

they're likely to grow naturally. Vary the placement so the plants look like they sprouted up haphazardly.

- Gardeners can still exert some control over native gardens prone to growing a little wild. Borders and paths can better define the growing areas.

- Grow Native!, an initiative from the Missouri Prairie Foundation, suggests planting two to four species in broad sweeping masses or drifts. Mix grasses with flowering plants. The grasses produce dense, fibrous roots that can prevent weed growth.

Native plants should require minimal care. Keep an eye on them and supplement with water if conditions have been especially dry.



Office Hours:

M-Th. 8:30 a.m.-5 p.m.

Fri. CLOSED

THE DRUMMER

108 Central Ave., Buffalo

763-682-1221

HUGE MATTRESS SALE

GOING ON NOW - CALL FOR DETAILS



Family Owned Since 1957

VERGIN SALES

Hwy. 55 & Main St. • Rockford • 763-477-6651

www.verginfurnitureandappliancesales.com

Monday-Friday 9-7 and Saturday 9-4



Pansies - A Great Springtime Flower!

Plants for Window Boxes Looking Great!

10"-12" PANSY BOWLS

Early Gardening

WE HAVE...

POTATO & ONION SETS
STRAWBERRY PLANTS
ASPARAGUS ROOTS
CABBAGE PLANTS
BROCCOLI PLANTS

ORNAMENTAL TREES & SHRUBS
Ready for planting!

Celebrating 60 Years

READERS' CHOICE Awards
#1 Garden Center

The Place To Go For Things That Grow!
Schulter's Greenhouse & Nursery

1 Mi. S. of St. Michael on Co. Rd. 19

763-497-3747

Hours: Monday-Friday 8-7;
Saturday 8-5; Sunday 10-4

www.schultesgreenhouse.com

eXmark

OFFICIAL MOWERS OF THE BACKYARD LIFE



GOING ON NOW
ATTRACTIVE RETAIL FINANCING

ASK US ABOUT
EXMARK'S MILITARY AND
FIRST RESPONDERS DISCOUNT

Visit exmark.com or dealer
for complete details



A-1
OUTDOOR
POWER

Your Power Equipment Specialists

Co. Rd. 10 & 116
7630 Commerce St., Corcoran, MN

www.a1outdoorpower.com

763-420-2748



ROOFING | SIDING | WINDOWS | STORM DAMAGE



SMART Choice Offer:
\$500 OFF
any **ROOFING** or **SIDING** project
Booked by 5/15/23

Earning Your Trust Since 1994



**SMART MADE AFFORDABLE
A Family Tradition**

The start of SMA dates back to 1994 when it was founded by a Father and Son team – Steve M. Arrell and Steve M. Arrell II. Offering “Value” to our customers was a priority. We included SMA into the company name because we wanted to sign our name to each job as a reminder to always treat the customer’s home as if it were our own.

**Schedule Your Estimate
online at sma2day.com**



Call Today for Your FREE Estimate 763-315-8900

Ask about 0% INTEREST FINANCING

Charming farmhouse Amarillo fits on narrow lot

Land doesn't have to be plentiful to enjoy a country retreat. The Amarillo packs spacious, amenity-rich rooms into a classic farmhouse exterior able to fit on just about any narrow lot.

An elegant, minimalistic exterior features gabled roofing with batt and board ends, walls of lap siding and stone accents. A single raised trim post frames a front door set back beneath a covered porch, for a warm, rustic effect.

But step inside and find living spaces oozing contemporary charm.

Through the front door, an entry contains a staircase and an opening to the left, which reveals a roomy, flexible den. With front-facing windows and a closet, this space is among the most versatile in the home, and can easily be converted into a home office or

guest bedroom. A full bathroom is easily accessible just beyond the den from the entry.

Past the bathroom, the entry steps out into an open kitchen, dining and great room. This open floor plan creates multiple gathering spaces within a larger, shared space that occupies much of the ground floor.

Two walls of kitchen counters wrap around a refrigerator, dishwasher, double bowl sink, cooktop stove and oven. They surround a large island with an eating bar, perfect for an additional food prep area, or just to enjoy a meal. There is plenty of food storage space in a walk-in pantry beneath the staircase to the right, and additional storage shelves lay just beyond.

The kitchen opens straight ahead to a dining room, and connects seamlessly to the spacious great

room. Anchored by a fireplace in the corner, the great room's connectivity with the kitchen and the dining room makes the entire space ideal for entertaining guests or just enjoying as a cozy retreat for the family. Sliding glass doors open out from the dining room to a covered rear patio.

While these spaces emphasize openness, the owners' suite puts a premium on privacy. An opening off of the great room reveals a utility room through a sliding pocket door, while a door to the left opens to the luxurious owners' suite. Rear-facing windows stream in light, and a sliding door opens to the owners' bath with a stand-in shower, double sink vanity and private toilet. The owners' suite also boasts a large walk-in closet with a shelving system that can be designed to an owners' tastes.

Back near the utility room, another door opens to the two-car garage, with a side door exiting out to a concrete walkway. The garage also contains a pull-down attic access.

But there is more to see than attic space above. Back in the entry, take the staircase up to reach the Amarillo's upstairs loft and two secondary bedrooms. Another versatile living space, the loft could be an ideal conversion to a play room, library or more. The bedrooms are located on either side of the loft, with a shared full bathroom and linen closet.

The Amarillo 31-139 is created by Associated Designs, Inc.'s talented team of resi-



dential home designers. To learn more about this design visit www.AssociatedDesigns.com.

Amarillo PLAN 31-139

First Floor	1532 sq. ft.
Second Floor	730 sq. ft.
Living Area	2262 sq. ft.
Garage	495 sq. ft.
Dimensions	44'x52'

2000 SERIES

www.AssociatedDesigns.com



**NEIL'S
FLOOR COVERING**
CARPET • CERAMIC • VINYL • HARDWOOD
COMMERCIAL • RESIDENTIAL

Neil's Floor Covering is a one-stop shop for flooring. Check out our wide variety of styles in wood, vinyl, tile, carpeting and laminate at our show room, west of Arby's off Hwy. 55.

270 State Hwy. 55 NE ♦ Buffalo, MN 55313
763.684.0600 ♦ neilsfloorcovering.com

MINNESOTA LAKES BANK

I appreciate the little things MNLB does so well.

*Deann Gowin
Delano Floral & Gifts*

MY COMMUNITY, MY BANK™

mnlb.bank | 710 Babcock Blvd. E., Delano, MN 763.972.3385

SPRING SALES

20 **EVENT** 23

SAVE \$200 OR MORE

ON RAPTOR MOWERS

AT YOUR LOCAL HUSTLER DEALER

HUSTLER

J & J MARINE INC.
SALES & SERVICE
4 Miles West of Annandale • Hwy. 55 • South Haven
jjmarineinc.com • 320-236-3625 (DOCK)

HONDA MARINE **GODFREY**
YAMAHA **MERCURY**
ALUMA
SHOREMASTER **SUZUKI MARINE**

*Offer applies to Hustler Raptor Series Zero-turn mowers only. Valid 4/1/23 to 4/30/23, only at participating US dealers. Inventory varies by dealer; offer subject to availability at individual dealer. May not be combined with any other discount or offer and does not apply to prior purchases or purchases made before or after the promotion dates. Discount does not apply to tax, shipping and handling, or setup. If you return the merchandise, the value of this promotion is not refunded or credited to your account. No cash value, except where prohibited by law.

The buzz about bees

Warm weather and extra hours of sunlight spark flowering trees and plants to bloom anew. This is the time of year

when the air is sweet with the aroma of blossoms and the familiar hum of insects can be heard all around.



YARD BY YARD
Garden Design & Landscape
Garden Plans Start Here
www.yardbyyardgarden.com

Consultations
Designs
Installations
Maintenance

Shelly Liljequist
612.719.9891

Not all “bugs” are the same this time of year. While you probably won’t want ants invading your backyard grill fest, the presence of bees nearby can be a good thing — even if those curious yellow-and-black critters get a little close for comfort from time to time. That’s because almost 90 percent of wild plants and 75 percent of the leading global crops depend on animal pollination, indicates the World Wildlife Federation.

Bees are remarkable creatures in small packages. The following are some bee facts to buzz about, courtesy of the WWF, Save the Bees™, NASA, and the Texas A&M University Honey Bee Information Site.

- There are roughly 20,000 species of bees around the world. Most of them are solitary bees.
- Bees have five eyes. Two of the eyes are large compound eyes with hexagonal facets. The other three are small, simple eyes.
- Honeybees have a move called the “waggle dance.” It is a clever way of communicating to tell them where to go to find the best sources of food.
- Bees can carry up to 122 times their body weight in pollen and nectar.

len and nectar.

• Bumblebees leave footprint scents behind. They are able to distinguish between their own scents, the scent of a relative and the scent of a stranger as they look for food. They also can avoid flowers already visited.

• Should a queen bee perish, the hive workers will select a new young larva and feed it a special food called “royal jelly.” The larva will develop into a fertile queen.

• Bees flap their wings 190 to 200 times per second. They can fly up to 15 miles per hour.

• Female bees can sting; males do not. Losing the stinger will cause the bee to die. The honeybee only can sting once because its stinger is barbed. Bumblebees and hornets can sting multiple times because they have smooth stingers.

• It can require nectar from two million flowers to make one pound of honey.

• Many bees are not aggressive. Simply moving away from them can prevent a person from being stung. Generally, bumblebees and honey bees will only sting by accident or if a nest is being disrupted.

• Wasps are different from bees in that they are mostly known to be predators. They eat other insects and often food that people eat, which is why wasps are more likely to be found around your cook-out. Bees tend to be covered



in hair, while wasps (which include yellow jackets) are smooth.

Bees are remarkable creatures and should be celebrated as the weather warms up.

Home Exterior

Continued from Page 5

make a statement and real estate experts note how popular updated front doors are among buyers.

• **Unsightly landscaping:** It’s not only the physical components of the home that may suggest an update is necessary. Homeowners without a green thumb may have exterior landscaping that has seen better days. If a spring or summer day spent tending to your landscaping is not your ideal weekend pastime, then consider replacing unsightly landscaping with low-maintenance plants or hardscaping. These

alternatives to more needy plants can create curb appeal without requiring any extra work for homeowners.

• **Cracked driveways/walkways:** If the driveway looks like a busy road at the end of snow plowing season, chances are that’s adversely affecting the impression people have of your home. In addition, cracked walkways indicate a need for renovations, as these areas are front and center when welcoming guests.

Updating a home’s exterior can restore curb appeal and help homeowners feel better about their properties.

No Closing Cost* Home Equity Loans

Put your equity
to work for you.

- Home improvements
- Major purchases
- Debt consolidation

Contact us today!



609 Pacific Ave
Waverly MN 55390
763-658-4417

145 Nelson Blvd
Montrose MN 55363
763-675-2265

*Up to a \$50,000 loan request. Limited time offer. All loans subject to approval. Citizens State Bank NMLS# 781878

Equal Housing Lender

bankwaverly.com

CSB423

Member FDIC

SAVE up to \$1,200 with a New Federal Tax Credit on Energy-Efficient Hunter Douglas Shades*



Contact Us to
Learn More
Call 320-963-3039

- Help reduce your monthly utility costs with Hunter Douglas shades specifically designed to provide year-round insulation.
- Contribute to a more sustainable environment by lowering your energy use.

Rob's Flooring

Hwy. 55, Maple Lake, MN • Monday-Friday 8-5; Evenings & Weekends by Appointment
320-963-3039 • ShopRobs.com

*For tax credit details and restrictions and a list of qualifying products, see the Manufacturer's Certification Statement and FAQs at www.hunterdouglas.com/tax-credit. Hunter Douglas and its dealers are not tax advisors. Consult a tax professional regarding your individual tax situation and ability to claim a tax credit related to the purchase of the qualifying Duette® Honeycomb Shades. © 2023 Hunter Douglas. All rights reserved. All trademarks used herein are the property of Hunter Douglas.

Budget-friendly ways to freshen up your home's exterior

As any homeowner knows, renovation projects tend to cost a lot of money. The average cost of a home renovation is difficult to gauge, as such endeavors run the gamut from complex projects like a kitchen overhaul to simpler ones like painting a room inside a home. Indeed, the National Association of the Remodeling Industry notes that scope is what drives the cost of a renovation project.

Though there might not be an "average cost" of a renovation project, homeowners can expect to spend thousands of dollars on projects that are not very small in scale. Navigating such an expense at a time when inflation remains high might be difficult for some homeowners looking to maintain the appearance of their home exteriors. However, there are many budget-friendly ways homeowners can tend to the exterior of their properties.

• Power washing: Power washing won't break the bank but it can revive the look of a home. Power washing removes dirt and grime from the siding of a home and a power washing can be used to clean porches, walkways and patios as well. Hardware chains like Home Depot and Lowes typically rent power washers, but homeowners who don't want to do it themselves can hire a professional for a few hundred dollars, if not less. Power washing after winter can be a good idea, as the elements can take a toll on a home's exterior. A good power washing before spring and

summer entertaining season can thus give a home a fresh, clean look without breaking the bank.

• Furnished front porch: A furnished front porch can serve as a welcome sign to neighbors and provide a great place to relax with a morning cup of coffee and a good book. Homeowners with a small porch won't need to bust their budgets to upgrade their front porch furnishings. Some small chairs with bright cushions, a small table and a rug underfoot can revamp an entryway at low cost.

• Window box installation: Installing window box planters is another cost-effective way to brighten up a home's exterior. Homeowners can hang window boxes outside windows on the front of their homes and then fill them with brightly colored flowers to add an inviting pop of color to their home exteriors. The experts at Better Homes & Gardens urge homeowners to take weight into consideration before buying window planters. Keep in mind that soil and developed plants can be heavy, so look for a sturdy box as well as one that has drainage holes.

• Replace hardware: Another simple way to freshen up a stale exterior is to replace hardware. Door knobs, knockers, house numbers, and even the mailbox can appear dated after a while. Replacing these items is inexpensive and

quick but can have a profound impact on how the exterior of a home appears to residents and visitors.

Exterior renovations need not break the bank. Various simple and inexpensive tweaks can quickly revitalize the exterior of a home.



2023 AAS Ornamental Seed Winner

Article & photo by
All-America Selections

Snapdragon
DoubleShot™ Orange
Bicolor F1

Available Soon

Hit me with your best shot...of double flowers! DoubleShot Snapdragon Orange Bicolor is part of a new series of intermediate-height snaps perfect for the garden or as cut flowers. The stunning open-faced double flowers emerge in beautiful warm shades of orange and orange-red that transition to a dusty shade as they age. AAS Judges across the country were impressed with the strong stems that produced more branches resulting in a higher flower count. These stems produced romantic flowers all season long

(even in lower light conditions) that didn't break off in strong winds. Tried in both the in-ground and container trial, DoubleShot will be your new go-to snapdragon.

How to Grow

Plant in as much sun as possible for maximum flowering. Any good garden soil is good for Snapdragons, add some compost if the soil is hard and compacted. Water daily for the first week to 10 days until the plant roots into the soil. Then enjoy your flowers for the rest of the season.





Get a Load of This!

- Decorative Rock - Large Selection • Drainage Supplies • Wood Mulches & Chips
- Pulverized and Screened Top Soil & Garden Mix • All Types of Driveway Aggregates
- Fieldstone Boulders & Steps • Synthetic Turf • Landscape Supplies
- Rubber Mulches & Landscape Products • Natural Wall Stone, Edgers & Flagstone
- Play Sand • Volleyball Sand • Mason Sand • Salt/Sand Mix & Treated De-Icing Salt
- Trucking, Skid Loader & Compact Excavator Services

Pick up or Prompt Delivery • "Serving You Since 1973"

13530 Willandale Rd., Rogers | www.HassanSand.com | 763-428-2393

Business Hours: Mon-Fri 7am-4pm • Saturdays 7am-Noon

quick but can have a profound impact on how the exterior of a home appears to residents and visitors.

Exterior renovations need not break the bank. Various simple and inexpensive tweaks can quickly revitalize the exterior of a home.

We service most makes and models!

Pickup & Delivery
Financing Available

 **Zero-Turn & Tractor Mowers**



115 Division Street W,
Maple Lake, MN 55358
763-248-9088



ALTOZ
ALWAYS AHEAD!



Made in MN!

We service most makes and models.
Pickup & Delivery • Financing Available
115 Division Street W, Maple Lake, MN 55358
763-248-9088

We Sell & Install Hardwood, Carpet, Laminate, Tile, Showers & More!
Free In-Home Consultations & Estimates!



LARGEST LUXURY VINYL PLANK Selection in MN!!

We buy direct from manufacturers and pass the savings on to you!



Our Service and Quality will FLOOR you!

Visit our showroom, available by appointment.

Call Brady 612-812-8588 or email brady@cornerstonefloordesign.com

www.cornerstonefloordesign.com

How to make your backyard safe for dogs

Dogs, particularly puppies, can be full of boundless energy. Channeling that energy into exercise with long walks or play sessions can help stem dogs' propensity to get into trouble around the house as they burn off extra adrenaline. Pets who don't have an energy outlet may chew off-limits objects or get into other mischief.

According to the American Kennel Club, the amount of exercise a dog needs depends on the animal's age and breed. For example, border collies or Siberian huskies may require much more exercise

natives than chemical-based products.

Fence off the yard

Off-leash running and bounding through the yard will make any dog smile. However, a fence is a must-have to ensure a dog doesn't become an escape artist. Be sure the fence is high enough so that the pup cannot jump over it. Burying chicken wire in the dirt beneath the lower edge of the fence also can help prevent dogs who like to dig from exiting by crawling underneath the fence.



than English bulldogs, simply because the former are working breeds. Pet owners with large backyards often find those outdoor spots are ideal for when their dogs get the "zoomies," something that tends to be a daily occurrence. Letting their dogs run around yards, whether on their own or chasing tossed tennis balls, is an ideal way to provide exercise and tire out pups. In such scenarios, it's vital that pups have a dog-friendly yard in which to play.

Use safe lawn care products

An expanse of grass is the perfect place to frolic or enjoy some sunbathing — for people or pets. But contact with chemically treated lawns can cause a number of health issues for dogs, such as allergies or intestinal upset.

Switching to native grasses can reduce the need to use chemicals to get lush lawns. When supplementation is needed, homeowners can switch to organic products or natural compost as safer alter-

animal and prompt it to defend the property. A lock also helps prevent dog theft.

Keep the yard tidy

Maintaining a clean yard also is key to safety. Inspect the yard regularly to make sure nothing is around that can prove harmful, whether it's poison ivy, felled branches or broken fence panels. Also, keep shrubs and grass trimmed to reduce flea and tick populations on the property.

Avoid poisonous plants

Certain plants can be dangerous if they're consumed by curious pups. Chrysanthemums, peonies, irises, and hydrangeas are some plants that can be poisonous. For a full list of poisonous plants, visit the ASPCA website (aspcasite.org).

Keep an eye on animals

Dogs can spend some unattended time in the yard, but check in from time to time. Should wildlife get into the yard, dogs may get hurt by tussles or bites. Birds of prey, such as owls, hawks and even vultures, may attack small dogs in a yard. According to Pat Silvosky, director of the Milford Nature Center in Kansas, some birds can be territorial. While they might not view a dog as an easy meal, they could swoop down and attack to defend territory. The same may occur with other wild animals.

A dog-friendly yard may require a little effort to create, but it's worth a little sweat equity to keep pups safe.

Consider installing a lock on the fence gate so that no one can wander in and surprise the dog, which may startle the

RUGSUCKERS, INC.
763-614-7279

SPRING CLEANING?

- Carpet & Area Rug Cleaning
- Upholstery Cleaning
- Stain & Odor Removal
- Automotive Carpet Cleaning
- Stone, Tile & Grout Cleaning (Floors, Walls, Counters, etc.)

BASE PRICING:
 \$100.00 for first 2 rooms (up to 300 sq. ft.)
 \$25.00 Additional Room
 \$100 Minimum Charge (Spot Removal)
 Hard Floor Cleaning - Starting at \$1.25 sq/ ft.

www.rugsuckersinc.com



Nostalgic farmhouse plan is filled with rustic charm

The Newburg is a charming two-story farmhouse plan that offers homeowners a perfect blend of modern convenience and rustic charm. With a total living area of 1797 square feet, this home offers ample space for comfortable living. The main level of the house boasts an open floor plan that includes a spa-

rious country kitchen, a cozy dining room, and a vaulted living room with a gorgeous fireplace that serves as the focal point of the room.

The country kitchen features modern appliances, custom cabinetry, and a breakfast nook that is just steps away and perfect for entertaining guests or serving up quick meals. The dining room is conveniently located off the kitchen and offers plenty of natural light, making it a warm and inviting space to enjoy meals with family and friends.

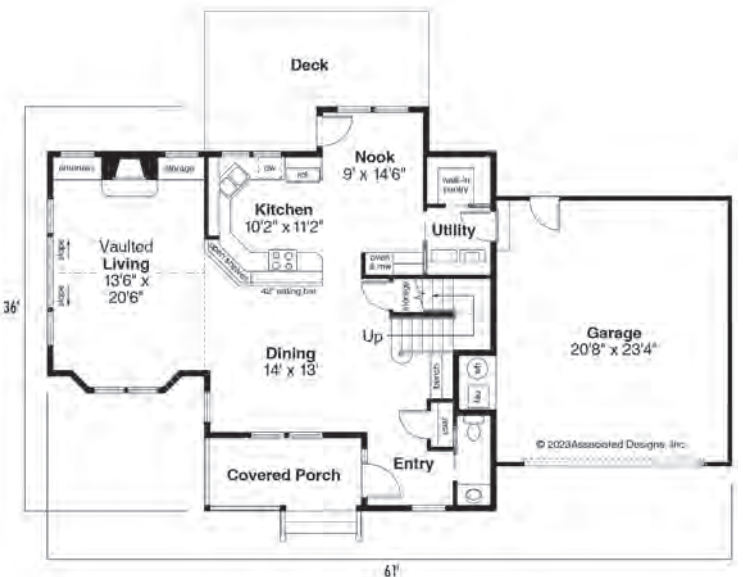
The living room is designed to be the heart of the home, with its vaulted ceilings and impressive fireplace. The fireplace serves as a stun-

ning centerpiece and provides warmth and ambiance on chilly nights. The living room also features large windows that flood the space with natural light, making it the perfect spot to relax and unwind.



Upstairs, you'll find three bedrooms, including the master suite. The master bedroom is a luxurious retreat that includes dual closets and a private en-suite bathroom. The en-suite bathroom features a step-in shower and twin sinks, making it a spa-like oasis for the homeowner.

Overall, the Newburg farmhouse plan is a perfect choice for those who want to enjoy a comfortable and relaxed lifestyle in a home that combines modern amenities with rustic charm. With its spacious living areas, three bedrooms, and beautiful finishes, this home is a must-



see for anyone looking for a comfortable and inviting living space.

The Newburg 10-138 is created by Associated De-

signs, Inc.'s talented team of residential home designers. To learn more about this design visit www.Associated-Designs.com.

Newburg PLAN 10-138

First Floor	1058 sq. ft.
Second Floor	739 sq. ft.
Living Area	1797 sq. ft.
Garage	520 sq. ft.
Dimensions	61'x36'

1500 SERIES

www.AssociatedDesigns.com

STUMP REMOVAL
KR
BUFFALO MINN.

**FREE ESTIMATES
FULLY INSURED**
Serving West Metro Area
KEITH A. RUDE | OWNER
612-805-8564
karude@charter.net

Got Mud?

Tired of your muddy driveway?

- Let us give you a **FREE ESTIMATE** for paving your driveway.
- We've been paving driveways for over 30 years.
- We are a local, family owned company.
- We stand by our products and workmanship.
- Mention this ad** and receive **5% OFF** the price of your driveway.

PH. **320-274-3037** or **800-779-3037**
or estimating@midmnhotmix.com **Annandale, MN**

**MID-MINNESOTA
HOT MIX
INC.**

~ SOUTH BAY PONTOONS ~ SPRING SPECIALS



We carry some models of the South Bay Pontoons in stock, but may order any model you would like!



"Just a nice place to do business!"
A-1 MARINE INC.
www.a1marineinc.com • Hwy. 55 W • Annandale, MN
320-274-8227
Serving this area for 39 years!

Buffalo Floral & Landscaping

Great Landscaping - Done Right from Concept to OOH!... not Ouch!

**FULL SERVICE LANDSCAPING
AND IRRIGATION
DESIGN AND INSTALLATION**

**FREE
ESTIMATES**

**Weekly Lawn Mowing Services
Available - Call Now**

3 Year Guarantee on Plants & Workmanship



763-682-2010 • 114 Central Ave. • Buffalo • www.buffalofloral.com



2023 AAS Edible – Vegetable Winner

Article & photo by
All-America
Selections

Pepper jalapeno
San Joaquin F1

This new San Joaquin jalapeno pepper will make gardening so much easier. This is a determinate jalapeno that sets most of its fruit in a short window so there is a generous (~50 fruits per plant) number of fruits ready all at the same time. Perfect for canning, pickling, and making roasted stuffed jalapenos

for a crowd. But no worries if you won't need them for a while as they hold their firmness and taste until you are ready to harvest. Judges loved the flavor of the thick-walled fruits that have just a hint of heat at 2500-6000 Scoville units. Leave them on the plant longer for a beautiful red, and still delicious, jalapeno.

How to Grow

Sow seed 1/4" deep, about 8 weeks prior to transplanting. When the first true leaves

Popular insect repellent plants for the garden

Homeowners choose plants for their properties based on a number of variables. Some may be into growing their own foods, while others desire their gardens to be an awe-inspiring mélange of bright colors and alluring scents. There's no wrong reason to plant a fresh garden, but some plants offer extra benefits, such as repelling insects.

Insects can be a nuisance and a threat to individuals' overall health. According to the American Academy of Family Physicians, insect-borne diseases are viral and

appear, transplant seedlings into 4" pots. Grow plants at approx. 70°F (21°C) day and 60°F (16°C) nights. Transplant out after frost when the soil is warm and the weather is settled. Peppers thrive in well-drained, fertile soils with a pH of 6.5. Space pepper plants 24" apart. Water-in transplants using a high phosphorus solution.

bacterial illnesses that develop from insect bites. Mosquitoes, sand flies and fleas are some examples of insects that can pass on disease. Fever, chills, headache, and muscle soreness are just a few of the more common symptoms linked to insect-borne diseases.

The good news for avid gardeners is that certain plants can help repel insects and provide the additional benefits like fresh food and aesthetic appeal that so many people love.

• **Basil:** The aroma of fresh basil is enough to compel any gardener to make a place for it in their garden. But there's more to fresh basil than its scent, as the Farmers Almanac notes it can be used to repel mosquitoes and moths.

• **Lavender:** Fleas, flies, mosquitoes, and moths are not fans of this aromatic and colorful member of the mint family. Bees tend to be drawn to lavender, a durable plant that many garden centers recommend in areas prone to drought or hot summers without much precipitation.

• **Mint:** Mint is another plant that is instantly recognizable for its aroma. But mint lovers may not realize that it's also great for keeping ants at bay. Mint also can be used to repel mosquitoes, but gardeners with no experience planting mint should plant it in pots. That's because the Farmers Almanac notes mint is an especially aggressive spreader that can quickly take over a garden. Separating mint in pots can prevent it from bullying its way into other plants' domains.



• **Lemongrass:** Lemongrass is a tropical grass that's so fragrant it's often used in perfumes. Lemongrass contains citronella, which many people associate with repelling mosquitoes. A potted lemongrass plant can repel these unwanted guests, keeping them away from decks, porches and/or patios all summer long.

• **Chrysanthemums:** The Farmers' Almanac® recommends using chrysanthemums,

which repel a range of insects from bedbugs to fleas to ants, as border plants around a home. That's because they contain the natural insecticide pyrethrin, which can serve as something of an insect-repelling boundary around a home.

Insects are unwanted guests around a home each spring, summer and fall. Certain plants can help repel insects and serve as an eco-friendly alternative to insecticides.

ACE of Albertville

BEST BRANDS IN GRILLS



BLACKSTONE

6050 LABEAUX AVE. NE, ALBERTVILLE, MN 763-497-4211



Give your home the protection it deserves.

Your home is where you make some of your best memories, and that's worth protecting. I'm here to help. LET'S TALK TODAY.

Mark Olson, Agent
124 Lake Boulevard S
Buffalo, MN 55313
Bus: 763-682-2752
mark@markolsonsf.com



State Farm Fire and Casualty Company, State Farm General Insurance Company, Bloomington, IL
State Farm Florida Insurance Company, Winter Haven, FL
State Farm Lloyds, Richardson, TX

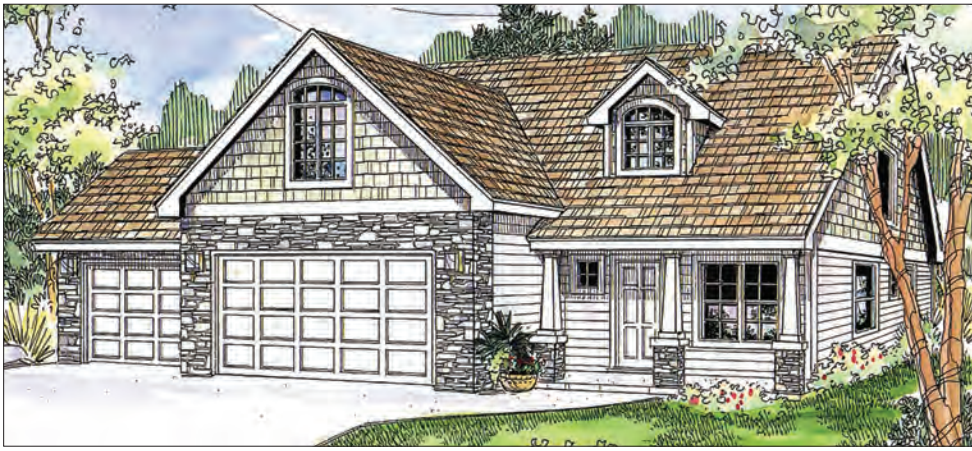


612-564-4860

Custom Shower Doors, Mirrors, Window Glass Replacement & More

304 Brighton Ave. S. Buffalo, MN

Serving Buffalo and the Surrounding Metro Area



Small house plan Eastham lives large with vaulted ceilings

The two-story Eastham is much larger than it looks from the street. This Craftsman cottage is deeper than it is wide, even with the three-car garage in front.

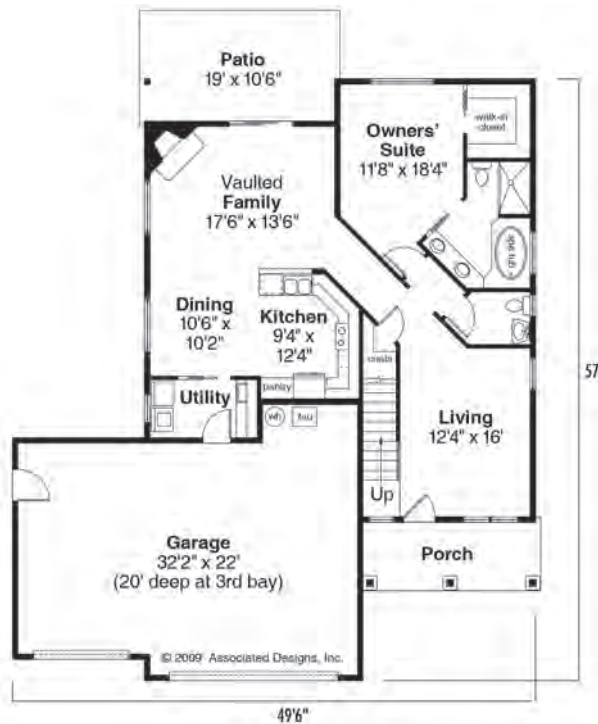
Stone veneer bases support the three tapered columns that draw eyes to the nostalgic front porch. Arched, multi-paned windows nestle under gabled dormers that face the street, adding to the welcoming feeling.

This plan has both a living room and a family room. The living room is just inside the front door, windowed on two sides, and has a stairway climbing its left wall. A roomy coat closet with shelves is tucked under the rear of the stairs.

A vaulted ceiling increases the volume of the more infor-

mal family room at the rear. It, too, has windows on two side, and is open to the kitchen as well as the dining area. Only a peninsular counter marks the boundary. Appliances are built into the lengthy counters, and a pantry fills the cabinetry at one end.

Just around the corner is a good-sized utility room complete with a folding counter and deep sink. Having this room linked directly to the three-car garage allows family members to wash up and take off grungy footwear before they enter the house. It also comes



Eastham PLAN 30-622

First Floor	1298 sq. ft.
Second Floor	604 sq. ft.
Living Area	1902 sq. ft.
Bonus Room	321 sq. ft.
Garage	757 sq. ft.
Dimensions	49'6" x 57'

1500 SERIES

www.AssociatedDesigns.com

Box Drop
— Mattress Direct —

When all you want is a
GOOD NIGHT'S REST!

HOURS: Tues. & Wed. 1-4 PM; Thurs. 4-7 PM

Always 30-70% Below Retail!

209 5th St. NE, Unit #3 • Buffalo • 763-400-4340

in handy as a sleeping area for pets.

A powder room and owners' suite fill out the rest of the Eastham's ground floor. The powder room is so centrally located that it's convenient for a quick dash from outside or anywhere on this level.

Features in the well-appointed owners' suite include a roomy walk-in closet, and luxurious bathroom with spa tub, dual vanity and large shower. Two more bedrooms, a bathroom, and a deep bonus room are upstairs.

The Eastham 30-622 is created by Associated Designs, Inc.'s talented team of residential home designers. To learn more about this design visit www.AssociatedDesigns.com.

2023 AAS Perennial Winner

Article & photo by
All-America
Selections

Echinacea Artisan™ Yellow Ombre F1

Artisan Yellow Ombre is a great plant for anyone wanting vibrant color all season long in their perennial garden, or to use as a cut flower. This is the first F1 hybrid echinacea series that comes in individual colors. This winner, with an intense golden yellow bloom along with graduated colors of yellow, is a gem in the garden.



Echinacea Artisan

Continued on Page 15

A TRUSTED LOCKSMITH AND SECURITY PARTNER SINCE 1991

Medeco Patented Protected Locks • Electronic Access Control
Door and Frame Repair and Replacements • Surveillance Camera Systems

205 5th Street NE #6 Buffalo, MN 55313

763-682-1253
www.russellsecurity.com
info@russellsecurity.com

FARM-RITE
EQUIPMENT INC.

Bobcat

Dassel, MN 888-679-4857 Willmar, MN 877-484-3211
St. Cloud, MN 844-262-2281 Long Prairie, MN 866-514-0982

WWW.FARMRITEEQUIP.COM

How to corral spring allergies

Spring is synonymous with rebirth. Each spring, flowers begin to bloom again, grass starts to grow and people from all walks of life rekindle their love affair with the great outdoors. Spring also marks the return of a familiar foe: allergies.

Seasonal allergies can put a damper on even the most welcoming spring day. After all, a

day soaking up the sun isn't so relaxing when it's also spent sneezing and confronting allergy symptoms like congestion, runny nose and watery eyes. Thankfully, it's possible for seasonal allergy sufferers to have their spring and enjoy it, too.

• Pay attention to seasonal allergy trackers. Seasonal allergies are now easier to

track than ever. For example, Pollen.com is an easily accessible and free site that allows visitors to type in their ZIP codes and access daily allergy reports for their towns and cities. Visitors also can see five-day forecasts that can help them plan trips and other outdoor excursions. Weather.com also offers free allergy reports and forecasts. Individuals with seasonal allergies can make use of these sites and plan



prevent outdoor allergens from entering a home, so utilize units on warm spring days when you might otherwise open the windows. Open windows and screen doors provide easy entry points for allergens like pollen, so turning on the AC when outdoor allergen counts are high can make seasonal allergies more manageable.

• Consider treatments. Over-the-counter treatments like antihistamines, nasal sprays and decongestants provide most individuals with sufficient relief from their seasonal allergies. If OTC remedies are ineffective, treatments such as allergen immunotherapy and a consultation with an allergen may be necessary.

Seasonal allergies can spoil an otherwise welcoming spring day. But there are many ways for individuals to corral their seasonal allergies and still enjoy spring sun.

their activities based on the information they provide.

• Stay indoors when allergen levels are especially high. The Mayo Clinic notes that there are several things individuals can do to reduce their exposure to seasonal allergy triggers. That includes staying indoors on dry, windy days. This doesn't mean individuals need to lock themselves indoors all spring. But it's important that seasonal allergy sufferers recognize that some days might be too much to handle. Rain helps clear pollen from the air, so individuals who are avoiding the outdoors on days when pollen counts are high should be able to get outside after a good rain without

triggering an attack.

• Maintain clean air indoors. The great outdoors is not the only place where allergens percolate. The Asthma and Allergy Foundation of America notes that improving air quality in a home can reduce allergy triggers. Air conditioners can



We Have...

- **Pansy Hanging Baskets**
- **Green House Plants**
- **Seed Potatoes**
- **Onion Sets**
- **Succulents**
- **& Lots More**

Visit Our Website at: www.djgreen.com/garden-center

We can also be found on Facebook under Dan & Jerry's Monticello Garden Center

Dan & Jerry's
Garden Center

**NOW
HIRING!
CALL FOR DETAILS**

2498 85th St. NE, Monticello, MN
(1 Mi. West on 106 from Hwy. 25 S.)
763-295-5868

WE'RE OPEN
Monday-Friday 8-7
Saturday 8-6 & Sunday 10-5
(Hours subject to change due to weather/season.)



2023 AAS Perennial Winner



Article & photo by
All-America
Selections

Salvia Blue by You

Add a touch of blue to your garden with beautiful new AAS Winner Blue by You salvia. This perennial features rich blue flowers that bloom

Salvia Blue

Continued on Page 14

**RV & CAMPER
MATTRESSES
60" x 75"**

**In stock from
\$398**
Other Sizes Available

1220 S. Hwy. 25, Monticello • 763-314-0333
(Next to Pizza Ranch)
OPEN Wednesday-Friday 12-6
Saturday & Sunday 12-5 • Closed Monday & Tuesday

**ALL-AROUND
STRENGTH**

XT2™ LX46

- 23 hp** twin Kohler® HD engine
- 46" heavy-duty fabricated AeroForce™ deck
- Tuff Torq™ hydrostatic transmission
- Soft-touch steering wheel; cut-and-sew adjustable high-back seat

\$3,499*

ULTIMA™ ZT1™ 50

- Premium 23 hp** twin Kawasaki® FR691V engine
- Continuous 2- x 2-inch tubular steel frame
- Dual hydrostatic transmissions
- 50" heavy-duty AeroForce fabricated deck

\$3,799*

ULTIMA™ ZT2™ 54

- Premium 23 hp** twin Kawasaki® FR691V engine
- Continuous 2- x 2-inch tubular steel frame
- Dual hydrostatic transmissions
- 54" heavy-duty AeroForce fabricated deck

\$4,899*

FOR FULL PRODUCT SPECS, VISIT CUBCADET.COM

**TRUEMAN
WELTERS
POWERSPORTS**

YOUR INDEPENDENT DEALER - EXPERT SERVICE. LOCALLY OWNED!

1600 Hwy. 55 & Co. Rd. 134, Buffalo, MN
763-682-2200
www.trueman-welters.com

CALL FOR SPRING SERVICE SPECIAL!

¹ Restrictions apply. See dealer or cubcadet.com/en_US/financing for details.
* Actual retail prices are set by dealer and may vary. Taxes are additional and vary by location. Freight and PDI charges may be additional and vary by dealer.
Models subject to limited availability. Images may not reflect dealer inventory and/or unit specifications.
** As rated by Kohler®, all power levels are stated in gross horsepower at 3600 RPM per SAE J1940 as rated by engine manufacturer.
As required by Kawasaki, horsepower tested in accordance with SAE J1995 and rated in accordance with SAE J2723 and certified by SAE International. © 2023 Cub Cadet

**Lawn • Landscape
Mosquito & Tick Control**

**COMPLETE OUTDOOR
SERVICES!**

763-204-4300

FREE ESTIMATES • ASK FOR JOSH
www.lakeslandscapingmn.com

**WE SUPPORT OUR VETS AND
SENIORS - DISCOUNTS APPLY!**

Commercial Applicator Lic. #20206802

5 signs it's time to renovate

Homeowners renovate their homes for a variety of reasons. Renovations can increase the value of a property and make homes safer and more comfortable for their occupants. Improvements also can be made to stay current with the times or to give a home a new vibe.

Statista projects \$510 billion will be spent on home improvements in 2024. The home improvement market is generating significant revenue. In fact, nearly a quarter of Americans opting to renovate their homes will spend an average of \$10,000 on their projects. According to a Home

Stars Renovation report, 8 percent of Canadian homeowners who have renovated have spent more than \$20,000 on a home improvement project.

Kitchens and bathrooms often get the most attention when it comes to home improvement. However, every room and space in a home may need a renovation at some point, and the following are five signs it's time to renovate.

1. Age

The National Association of Home Builders states that 50 percent of U.S. homes are over the age of 40. That means that age alone could dictate a need to renovate, particularly if some materials are original to the home. For example, asphalt roofs typically last 25 to 30 years, while window frames can last 20 to 50 years depending on how well they have been maintained.

2. Inconvenient layout

Some homeowners scratch their heads when faced with awkward floor plan layouts. While one may live with the inconvenience for some time, typically a floor plan that isn't working for the homeowner is a major driver of renovations.

3. Outdated looks

A home can look dated even if it is a relatively recent build. That's because trends change quickly. For example, dark, cherry cabinets that were popular just a little while ago have now been replaced by lighter color palettes. Homeowners whose homes do not match the looks emulated in design magazines may consider a change, particularly if they're planning to sell soon.

4. Deterioration

Signs of water, storm or structural damage should be addressed as soon as possible. Any deterioration should be a strong indicator that it's time to renovate.

5. Efficiency

Escalating utility bills could be indicative of an inefficient home. Homeowners can conduct energy audits and then improve the areas where energy loss may be occurring, such as windows, doors, siding, and insulation.

Homeowners can renovate their homes when they see fit, but various signs may warn that it is time consider updating or remodeling a home.

2023 AAS Perennial Winner

Article & photo by
All-America
Selections

Leucanthemum
Carpet Angel®

The first-ever groundcov-

er Shasta Daisy as well as the first-ever AAS Winner from this breeder. Green Fuse Botanicals' First Light Perennials is a program of first-year flowering perennials that are daylength neu-



tral, meaning earlier blooms that continue all season long. Large 3-inch flowers boast a second inner frilly bloom adding to the unique look of Carpet Angel. Growing only to a height of six inches, this unique Leucanthemum can act as a groundcover spreading up to 20 inches wide. Fantastic branching on this new AAS winner means more flower stems sporting beautiful pure white blooms that look like angels dancing over a carpet of dark green foliage. A little deadheading of spent flowers will reward you with even more blooms. Hardy in zones 4a-10b.

Available from your favorite garden retailer in plant form only.

How to Grow

May be ground cover, low edging, or planted in containers. Sun to part sun, no staking required.



HEGLE
GARAGE DOOR

Complete Inventory
Sales • Service
Repair • Openers
Spring Repair

600 6th St. NW, Maple Lake • 320-963-3934
www.hegledoor.com

TOLL FREE
800-273-4699



The Door to Quality



Great Deals on Our Remnants
and In-Stock Flooring



WOOD - Installation, Sanding, Prefinished
CARPET and LUXURY VINYL PLANK

Rob's Flooring

Hwy. 55, Maple Lake, MN • Monday-Friday 8-5; Evenings & Weekends by Appointment
320-963-3039 • ShopRobs.com

KAZ Hardware
& Rental Center

"Your Hometown
Hardware Store"

RENT ME!
Toro Dingo

Additional Attachments Available!

Rental • Hardware • Housewares • Tools
Plumbing • Paint • Electrical • Lawn & Garden
Saw Sharpening • Window & Screen Repair

Traeger and
Weber Grills



valspar
IT'S HOMETOWN. WE'RE NOT!

Main Street • Annandale

320-274-5214

Spring Savings at
LAKE REGION CO-OP

COUPON

CENEX HYDROTHOL 191
AQUATIC ALGICIDE AND HERBICIDE

\$15.00 OFF
LAKE WEED CONTROL
40 lbs. Coupon Expires 5-31-23
LAKE REGION CO-OP 4825 State Hwy. 55 NW, Maple Lake - 320.963.6074

- Crabgrass Preventer/
Fertilizer - 50 lb.\$32.99
- Bloom Fan Spray Nozzle\$1.79
- Bloom 2 Pc Nozzle Combo Pack\$6.79
- Strike 3 Broadleaf Killer - 1 Gal.\$56.99
- Gertens Potting Soil\$10.99
- Grass Seed - 20 lb. ...\$10.00 OFF
- Grass Seed - 50 lb. ...\$15.00 OFF

Stop in to get all of your lawn care needs this season... seeds, mulch, lawn decor, herbicides, insecticides, and so much more!

Many Inside Sales All Spring & Summer!

CENEX LAKE REGION CO-OP
4825 State Hwy. 55 NW, Maple Lake • 320.963.6074

How to create more privacy on your property

An inviting backyard can serve as a welcome retreat from the hustle and bustle of daily life. After a long day at the office or an exhausting day spent transporting kids to and fro, it's hard to resist the allure of a peaceful outdoor space in which to unwind.

Privacy is a key component of any backyard oasis. Some homes may be so remote that privacy isn't an issue. But many suburban homeowners recognize they might need to tweak their landscapes if they hope to create a private oasis outside.

than fencing. The home renovation experts at BobVila.com estimate that fencing projects typically cost between \$1,667 and \$4,075. However, fencing projects can cost considerably more than \$4,000, especially for homeowners with large properties they want to enclose. Large, mature trees can be expensive, though it's unlikely they will cost as much as fencing. In addition, fencing requires more maintenance and will potentially need to be replaced, while native trees won't require much upkeep and can last for generations.

Fencing or planting?

Most homeowners looking to create more privacy on their property will have to choose between fencing and planting. Fencing provides immediate privacy because, once it's installed, no one can see into the yard. Fencing also doesn't require watering or other immediate upkeep, which will be necessary when planting to ensure tree roots can establish themselves.

But planting has its benefits as well. Planting for privacy is essentially creating a living fence that can grow over time and provide even more privacy as trees reach maturity. Plants also tend to be less costly



Planting

Homeowners who choose to plant for privacy will next have to decide which type of plants to add to their properties. Evergreens provide year-round privacy because they don't shed their leaves, so these are the ones most often chosen when creating a living fence. A number of varieties of evergreen trees can do the job, but it's important that homeowners consult with a landscape architect prior to choosing trees so they can ensure the trees will thrive when faced with the growing conditions on their properties. During such a consultation, homeowners may discuss the following popular privacy trees.

- Leyland cypress: The Arbor Day Foundation® notes that

2023 AAS Edible – Vegetable Winner

Article & photo by
All-America
Selections

Tomato Zenzei F1
Available Soon

Zenzei is an early-maturing, high-yielding Roma tomato for gardeners in the Midwest. This regional winner produces a great yield of fleshy plum tomatoes that are perfect for canning and freezing. Neat and tidy plants produce fruits that are uniformly shaped and are easy to harvest on unique bushy yet indeterminate plants. The disease-re-

sistance package on this new variety will help gardeners be even more successful than before. Each fruit has good internal flesh and fewer issues like spots and blossom end rot. Plant in full sun and provide stakes or a cage when the plant reach-

es the appropriate size but there is no need to prune.

How to Grow

Plant in full sun, providing water when needed. Provide staking or cage when plant reaches appropriate size.



Salvia Blue

Continued from Page 12

up to two weeks earlier than the comparisons. With excellent winter hardiness and heat tolerance, Blue by You will be a new favorite in your perennial, pollinator, cutting, and container gardens. Bursting with bright blue blossoms from late spring into fall, you'll get repeat blooms throughout the season when spent blooms are removed. Adored all season long by hummingbirds and butterflies. Bonus; it is not

avored by deer or rabbits. Hardy in zones 4b – 9a.

Available from your favorite garden retailer in plant form only.

How to Grow

Plant in a sunny garden location allowing room to grow.

Remove old flowers to encourage continual blooming during the summer months.

Fertilize monthly during the growing season.

the Leyland cypress is popular for hedges and boundaries, likely because a typical tree reaches a mature height of 60'-70' and can spread as wide as 25'. The Leyland cypress grows fast, which may appeal to homeowners who don't want to wait to establish privacy.

- Green Giant Arborvitae: There are different varieties of the arborvitae, but the Green Giant tends to be the go-to option for privacy. The ADF notes that Green Giants will grow up to three feet per year until they reach maturity, providing a fast-growing option for privacy planters. The Green Giant can spread as wide as 20 feet at maturity, which is another attribute that makes it so popular among homeowners desiring privacy.

- Eastern White Pine: The ADF notes that the eastern white pine, which can reach heights as high as 80 feet, is favored in spacious yards. That's likely due to its height and its potential spread, which can reach 40 feet. Homeowners who choose the eastern white pine might like it for its resemblance to a Christmas tree, and in fact it is widely used for that purpose. The privacy provided by the eastern white pine is significant, but it might be best suited to especially large properties.

Whether it's fencing or planting, homeowners have many options to consider as they seek to create more privacy on their properties.



Albachten Roofing LLC
Annandale, MN

STORM DAMAGE?



Call for FREE Estimates • 612-281-1106

C&S BLACKTOPPING INC.
RESIDENTIAL & COMMERCIAL PAVING CONTRACTOR

Serving the Metro & Surrounding Areas Since 1967

REQUEST A FREE ESTIMATE

763-428-2225

www.c-sblacktopping.com

The Perfect Setup

Let us furnish all of your party rental needs in style.

10% OFF Your Total Wedding Rental Package

Offer good with coupon. When booked before 5/30/23.

Klatt True Value RENTAL

www.klattruevaluerental.com

Hwy. 25 N
Buffalo, MN
763-682-2436

To list your business in the
Wright County Area Business Directory
contact Karie 763-682-1221





Small farmhouse Washburn offers causal floor plan

Welcome to the Washburn, a 1659 square foot Farmhouse plan. As you approach the home, you are greeted by a spacious covered front porch with plenty of room for outdoor seating. The porch provides a perfect spot to enjoy the beautiful views of the surrounding

countryside.

As you enter the home, you are welcomed into the informal entry which leads directly into the heart of the home – the family room. To the right of the entry, the family room which is a cozy and inviting space with a large fireplace that serves as the focal point

of the room. However, the fireplace is adorned, either brick or tile, the option for a rustic wooden mantle will add to the farmhouse charm and make a perfect place to display family photos or seasonal decorations. The room is spacious enough to accommodate comfortable

seating for family gatherings and entertaining guests.

Moving through the home, the central staircase leads to the upper floor. The staircase can be finished with a traditional banister with white spindles and a dark wooden handrail. At the top of the stairs the landing transitions to a hallway that accesses all three bedrooms.

The second floor consists of three bedrooms and two bathrooms. The master bedroom is a spacious retreat with a sitting area that overlooks the front yard. The sitting area is perfect for reading a book or enjoying a cup of coffee in the morning. The master bathroom is en-suite and includes a walk-in shower. The two additional bedrooms share a compartmentalized bathroom which is divided into two sections, one with a

sink, and the other with the toilet and shower. This layout provides privacy for multiple users at once and makes getting ready in the morning a breeze.

Back on the main floor, the country kitchen fills the back of the home and is perfect for family meals and entertaining. The kitchen has plenty of counter space for food preparation and features modern appliances, including a refrigerator, oven, and dishwasher. A wall pantry is just a few steps away and the center island with stove-top boasts an eating bar for

casual dining.

The Washburn farmhouse-style home design is a charming and inviting home with a warm and welcoming feel. The covered front porch provides a perfect spot for relaxing and enjoying the views of the surrounding countryside or engaging with neighbors out for a stroll.

The Washburn 10-093 is created by Associated Designs, Inc.'s talented team of residential home designers. To learn more about this design visit www.AssociatedDesigns.com.

Echinacea Artisan

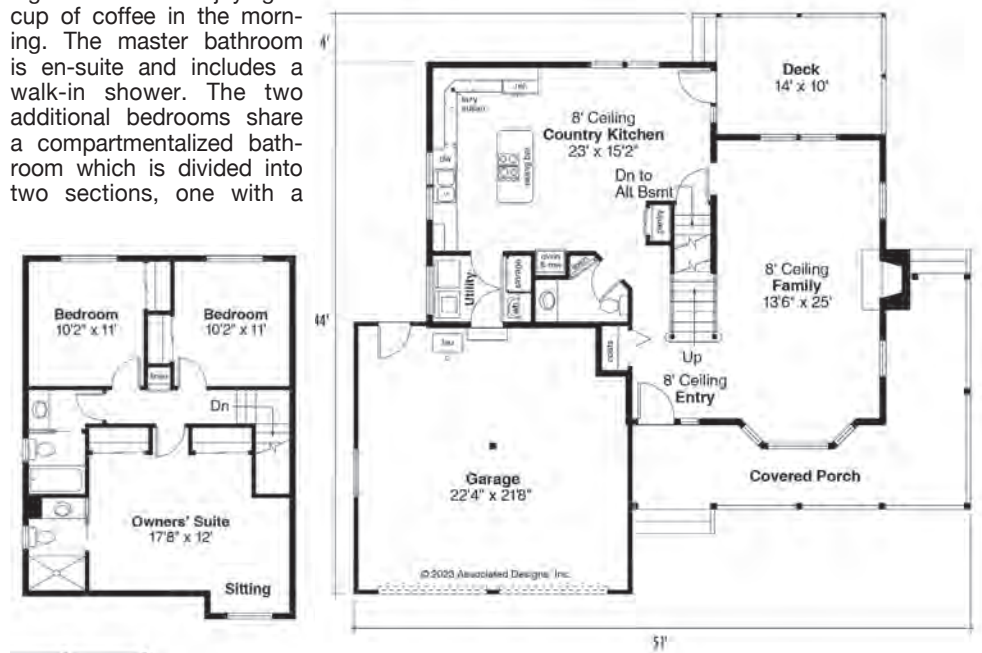
Continued from Page 11
AAS Judges were impressed with the uniform growth habit, vibrantly colored flowers, and multi-branched plants that produce a prolific number of blooms. Pollinators will flock to this echinacea, and gardeners will love this low-mainte-

nance, long-blooming beauty. Hardy in zones 4a to 10b.

How to Grow

Plant in full sun with well-drained soil for best over-winter performance. Attracts birds and butterflies. Blooms from summer to frost.

Washburn	
PLAN 10-093	
First Floor	960 sq. ft.
Second Floor	699 sq. ft.
Living Area	1659 sq. ft.
Garage	495 sq. ft.
Dimensions	51'x44'
1500 SERIES	
www.AssociatedDesigns.com	



J. AUSTIN CONSTRUCTION, LLC



Quality Construction - Built to Handle Our Midwest Weather!

Custom Built to Any Size Fast & Economical!

24x24x10 . . . \$7,500	36x48x10 . . . \$14,000
30x40x10 . . . \$11,000	40x64x12 . . . \$19,000

Subject to local building codes, snowload requirements, delivery & crew travel in some areas. Prices subject to change without notice.

Fully Insured #BC-20574944

320.492.6364
j.austinconstruction@yahoo.com



WINDOWS • ROOFING • SIDING • DECKING • CABINETS

 Lampert Lumber A Division of	<p>6601 Bleck Drive Rockford 763-498-7228 LampertLumber.com</p>
--------------------------------------------	----------------------------------------------------------------------------------------------------------------------------------



SPRING SYSTEM CHECK SPECIAL!



\$69

CALL BEFORE 5/5/23
AC SYSTEM CHECK

\$79

CALL BEFORE 5/12/23
AC SYSTEM CHECK

\$89

CALL BEFORE 5/19/23
AC SYSTEM CHECK

An annual inspection ensures that your AC will work when you need it and prevents costly emergency repairs and health risks in your home. Our staff receives regular training. We are dedicated to keeping our employees current with the latest technology, current on older systems and everything in between.

CALL THE TOP DOG!

CALL 763-684-3965 TODAY TO GET THE BEST DEAL! www.DeZielhvac.com

Find Out Why Minnesota Homeowners Keep Saying... *"It's The Best Thing I Ever Did To My Yard!"*



763-477-4532

Call Now for FREE Consultation
SAVE \$100-\$300 through May 31, 2023

Since 1986... 2,946,240 lineal feet installed

www.curbcreations.net